

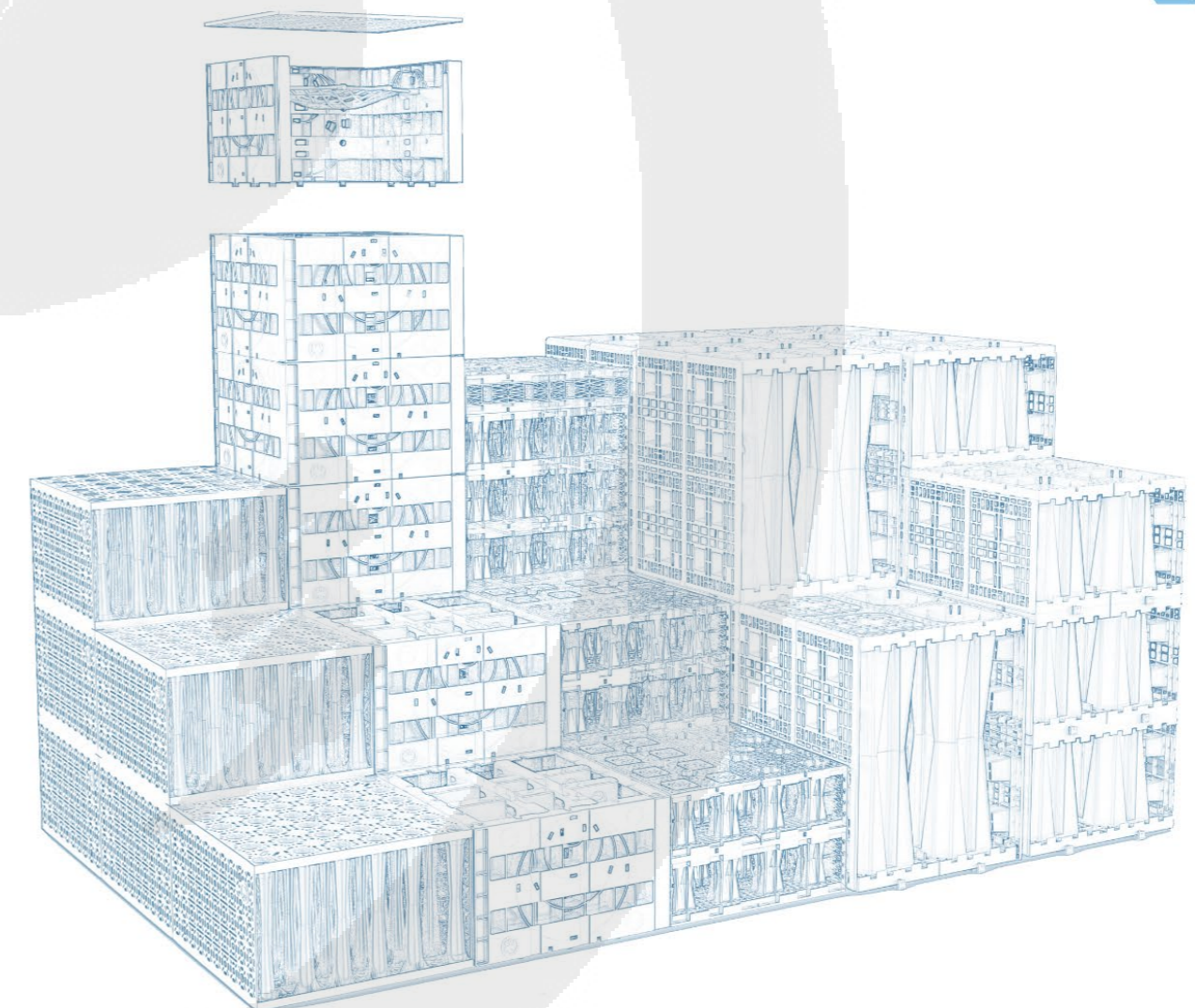


莱多实业
LEDO INDUSTRIAL

调蓄储存

Regulation and Storage

莱多，人水和谐共生的智造者
LeDo, The Smart Creator of Harmonious Coexistence Between Humans and Water.



Your Professional Dealer

莱

Shanghai LeDo Industrial Co., Ltd.

Add.: No. 508 Chuanhong Road, Pudong New Area,
Shanghai, China

Tel.: +86-21-50431766

Fax: +86-21-58373296

Email: ledo@shledo.com

Web: www.shledo.com



Company's
Official Website



WeChat Official
Account

Copyright © [2023] [Shanghai
LeDo Industrial Co., Ltd].
All rights reserved.

上海莱多实业有限公司
Shanghai LeDo Industrial Co., Ltd


Shanghai LeDo Industrial Co., Ltd., established in 2013, is committed to the ultimate goal of achieving water health and harmonious coexistence between humans and water. As a high-tech enterprise specializing in smart water services, sponge cities, pollution separation, water resource allocation, and water system purification, we uphold the philosophy of "cherishing every drop of water" and take technological innovation as our driving force. Our mission is to create a leading service platform in the water world and contribute energy to the national policies and construction needs concerning water resources, water environment, water ecology, water safety, and water culture.

The Detention and Storage Division at Shanghai LeDo has independently researched and developed various mainstream detention and storage facilities, including **Safety Rainwater PP (Polypropylene) Module**, **Nano Carbon-Silicon Magic Cube**, **Honeycomb Silica Sand Tank**, **Pipe Gallery-style PE (Polyethylene) Tank**, **Square PE (Polyethylene) Tank**, **Horizontal Carbon Steel Tank**, **Prefabricated FRP (Fiberglass Reinforced Plastic) Tank**, and **Stainless Steel Tank**. With four major production bases already established, our products cater to all application scenarios and meet diverse usage requirements from multiple angles. We are dedicated to uncovering more equipment value for the global water industry, enhancing efficiency, reducing costs, optimizing management, and accelerating the development of detention and storage products. Our efforts aim to promote harmonious human-water layouts by constructing an integrated water space.

 **125⁺**
Patent Technology

 **3000⁺**
Completed And Operational Projects

 **20000⁺**
Rainwater Projects That Have Been Designed

 **150 Million m³**
The Annual Water-Saving Scale

 **50 Million m²**
The Area Of Forest Protected For The Country Each Year

 **3 Billion RMB**
Annual Reduction in Social Losses



ISO9001



ISO14001



ISO45001



MISSION

Establishing a Harmonious Coexistence between Humans and Nature in Urban Water Ecological Environment



VISION

To Become a Leading Service Platform in the Water World



CORE VALUES

Honoring Agreements
Integrity and Honesty



SPIRIT

Integrity: Speak with one voice, act on your words, and take full responsibility for your actions.

Innovation: Arm your mind with the thinking of making the difficult easy, changing the status quo, and simplifying complexities; ordinary people can achieve extraordinary things.

Excellence: Be better than you were yesterday.

Win-Win: Learn to give in; understand the value of contribution; ask more about what you can give rather than what you can gain (the highest level: only ask what you can give, never what you can gain).

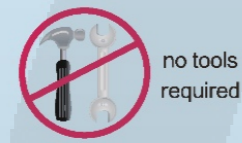
Selflessness: Establish a heart for the world (wherever there is awareness, there is heart), embodying perfect positive energy; enjoy life and find joy in work.

安全雨水PP模块

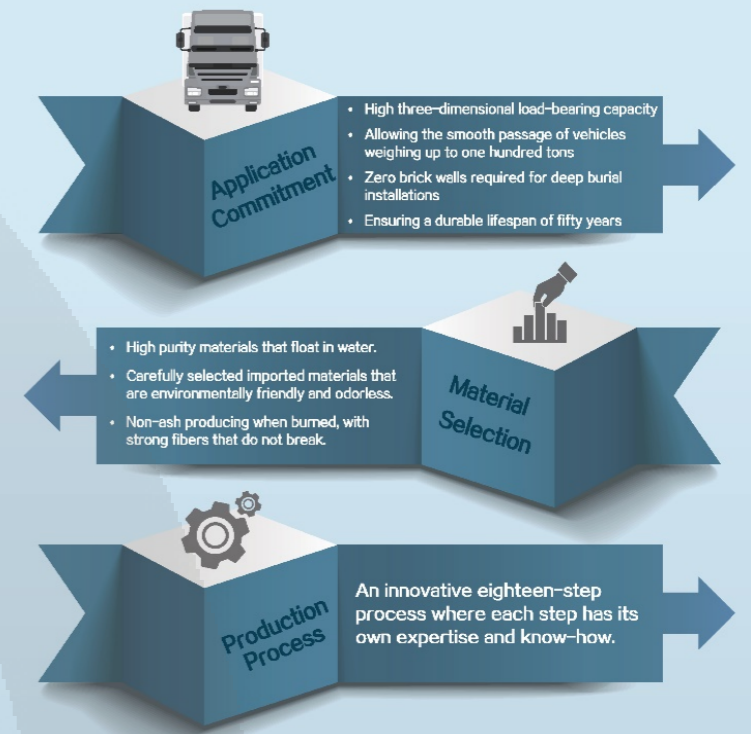
Safety Rainwater PP Module

China Module, Safe and Durable

As solid as reinforced concrete, it offers powerful durability and peace of mind.



no tools required



Square Cast Iron Manhole Cover

Safety Anti-Fall Net

Can be raised as needed, and can seamlessly connect with LeDo's PP modules, offering a perfect fit that enhances stability.

Modular Square Inspection Chamber

LDX-PP-9B

Bearing Capacity $\geq 700 \text{ kN/m}^2$

LDX-PP-8

Bearing Capacity $\geq 650 \text{ kN/m}^2$

LDX-PP-7

Bearing Capacity $\geq 450 \text{ kN/m}^2$

LDX-PP-10B

Bearing Capacity $\geq 400 \text{ kN/m}^2$

LDX-PP-10

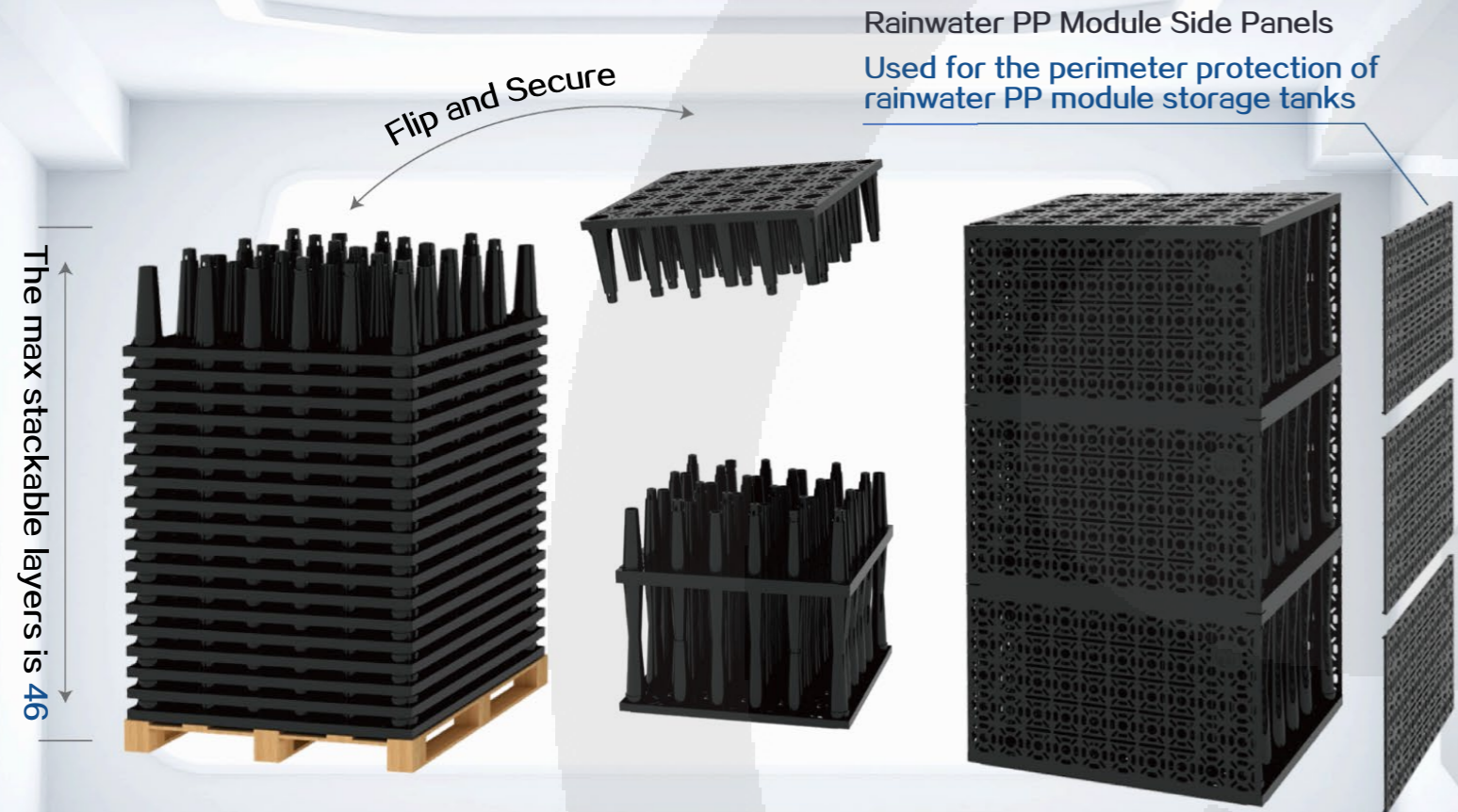
Bearing Capacity $\geq 300 \text{ kN/m}^2$

LDX-PP-9

Bearing Capacity $\geq 650 \text{ kN/m}^2$

LDX-PP-7

安全雨水PP模块
Safety Rainwater PP Module



The max stackable layers is 46

Rainwater PP Module Side Panels
Used for the perimeter protection of
rainwater PP module storage tanks

Flip and Secure

Easy to Transport

With a perfect stackable design, these products greatly reduce transportation costs. For instance, the loading volume for a 100 m³ water tank is only 23.3 m³.

Simple Installation

Installation is simple and quick, significantly shortening the project duration compared to traditional methods.

Superior Load-Bearing Capacity

The load-bearing capacity is ≥ 450 kN/m², making it suitable for use beneath small parking spaces.

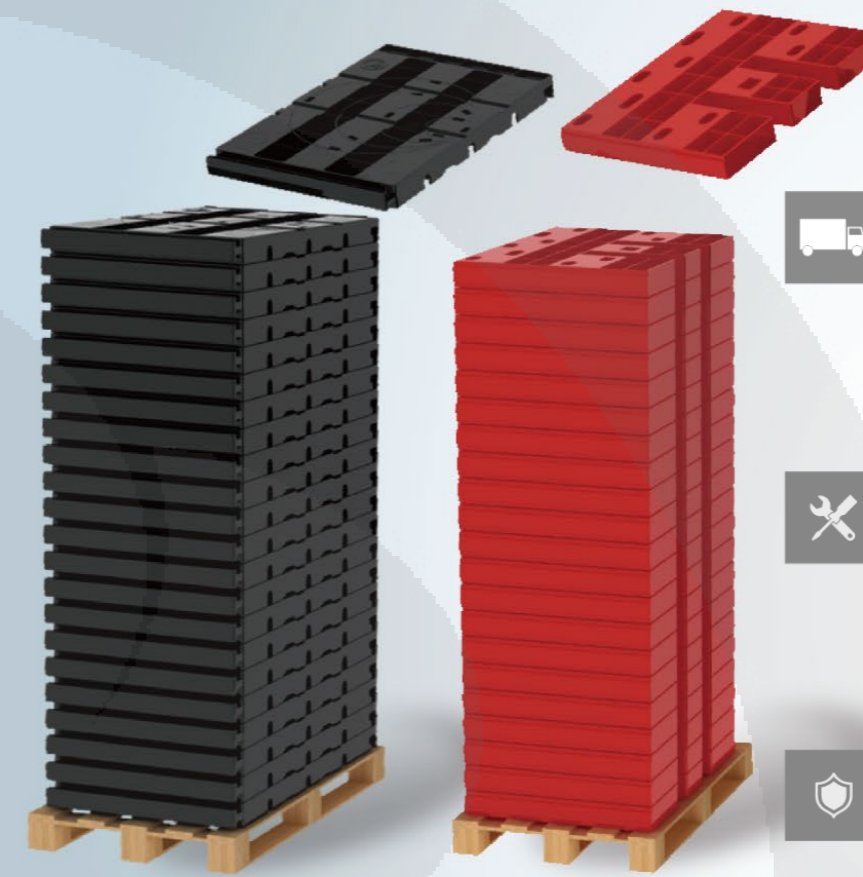
Eco-Friendly Product

A single truck can transport up to 3000 units. Once assembled, these modules occupy a volume of 480 m³. This method allows for a reduction in CO₂ emissions by approximately 85%.

LDX-PP-8

雨水缓释器

Rainwater Slow-Release Device



Easy to Transport



When loading, the main side panels and intermediate partition boards of the rainwater release device are stacked separately, allowing for multiple layers to be stacked, thus compressing the loading volume and saving transportation costs for customers.

Easy Installation

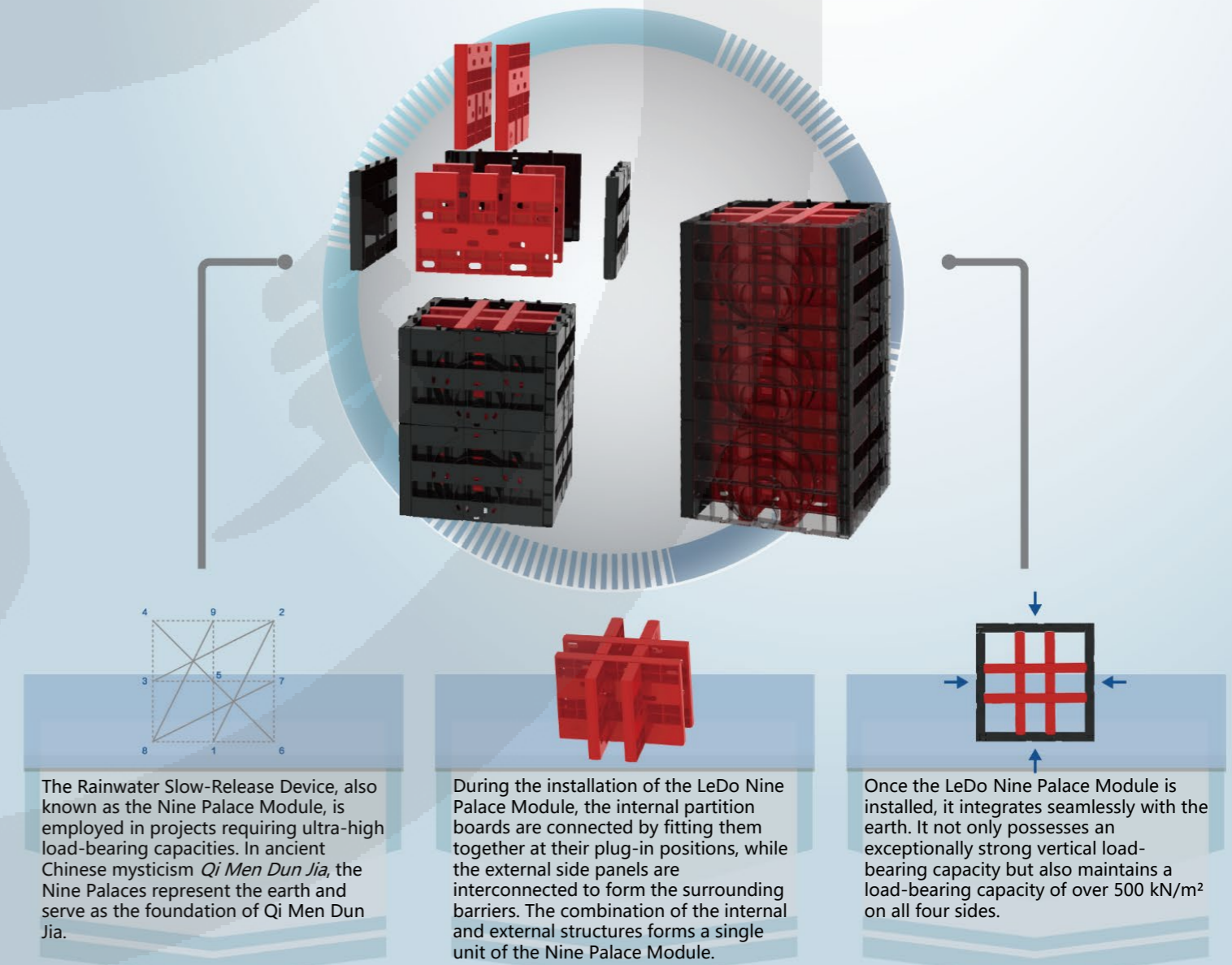


The installation method is simple and requires little from on-site construction personnel in terms of skill level, making it very easy to grasp. The quick construction significantly improves installation efficiency, reduces labor costs, and shortens the construction period.

Superior Load-Bearing Capacity



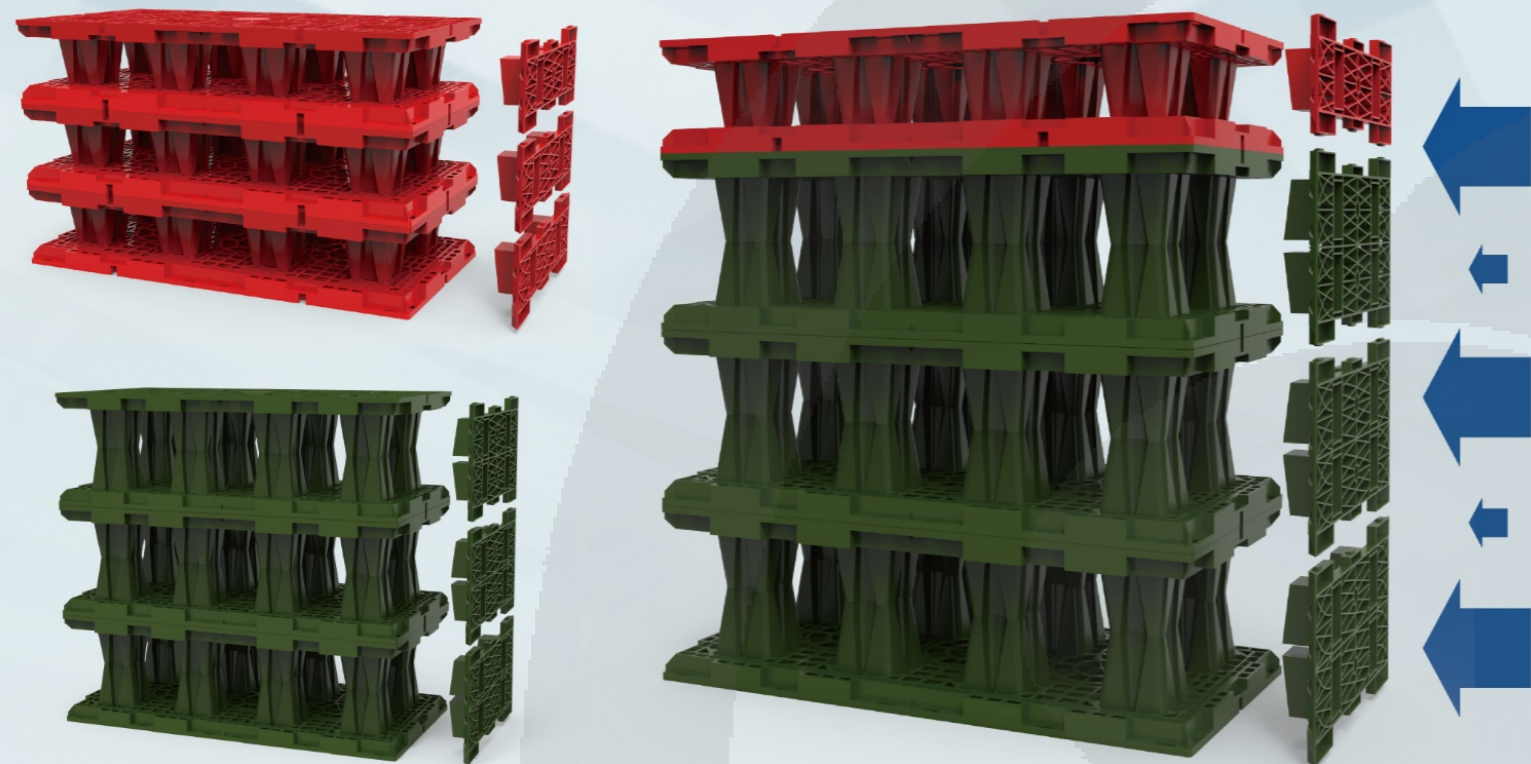
With a maximum capacity of up to 800 kN/m², this product can meet higher load-bearing requirements. It has also elevated the load-bearing capacity of existing mass-produced modules to a new level.



LDX-PP-9

灵泽蓄释模方 (安全雨水PP模块)

Lingze Rainwater Storage and Release Module (Safety Rainwater PP Module)



Easy to Transport

With a perfect stackable design, it significantly reduces transportation costs.

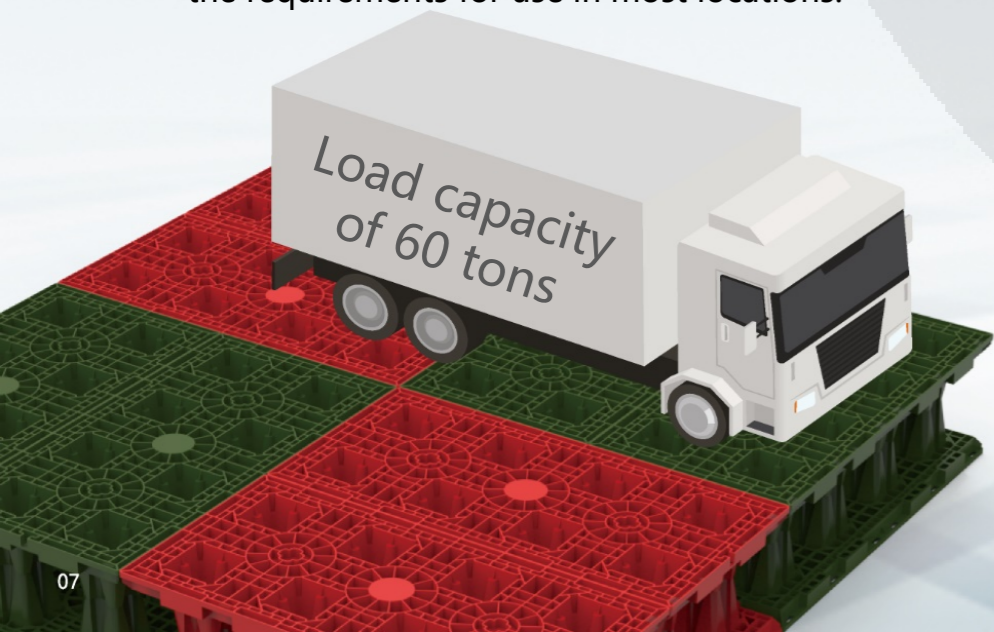
Easy to Install

Installation is simple and fast. Compared to traditional methods, the construction period is greatly shortened.

Surrounding circular layout with multiple groups of installations or circumferential installations inside, the unique assembly structure provides enhanced reliability.

Superior Load-Bearing Capacity

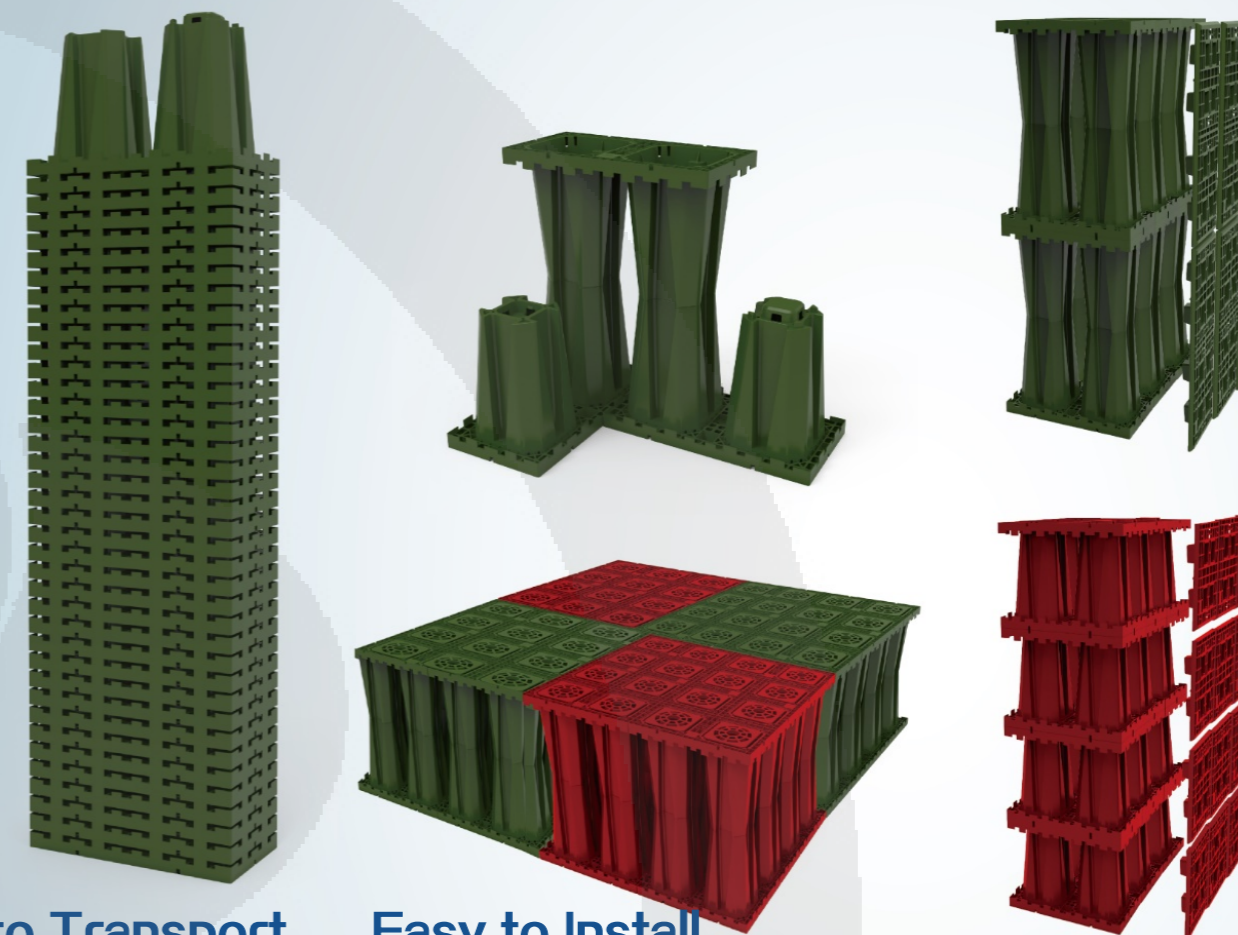
It has a front load-bearing capacity of $\geq 650 \text{ kN/m}^2$ and a side load-bearing capacity of $\geq 150 \text{ kN/m}^2$, meeting the requirements for use in most locations.



LDX-PP-10

安全雨水PP模块

Safety Rainwater PP Module



Easy to Transport

With a perfect stackable design, it significantly reduces transportation costs.

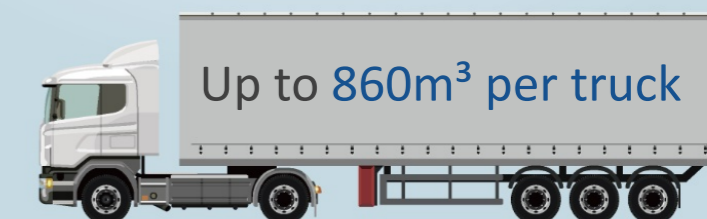
Easy to Install

Installation is simple and fast. Compared to traditional methods, the construction period is greatly shortened.

Surrounding circular layout with multiple groups of installations or circumferential installations inside, the unique assembly structure provides enhanced reliability.

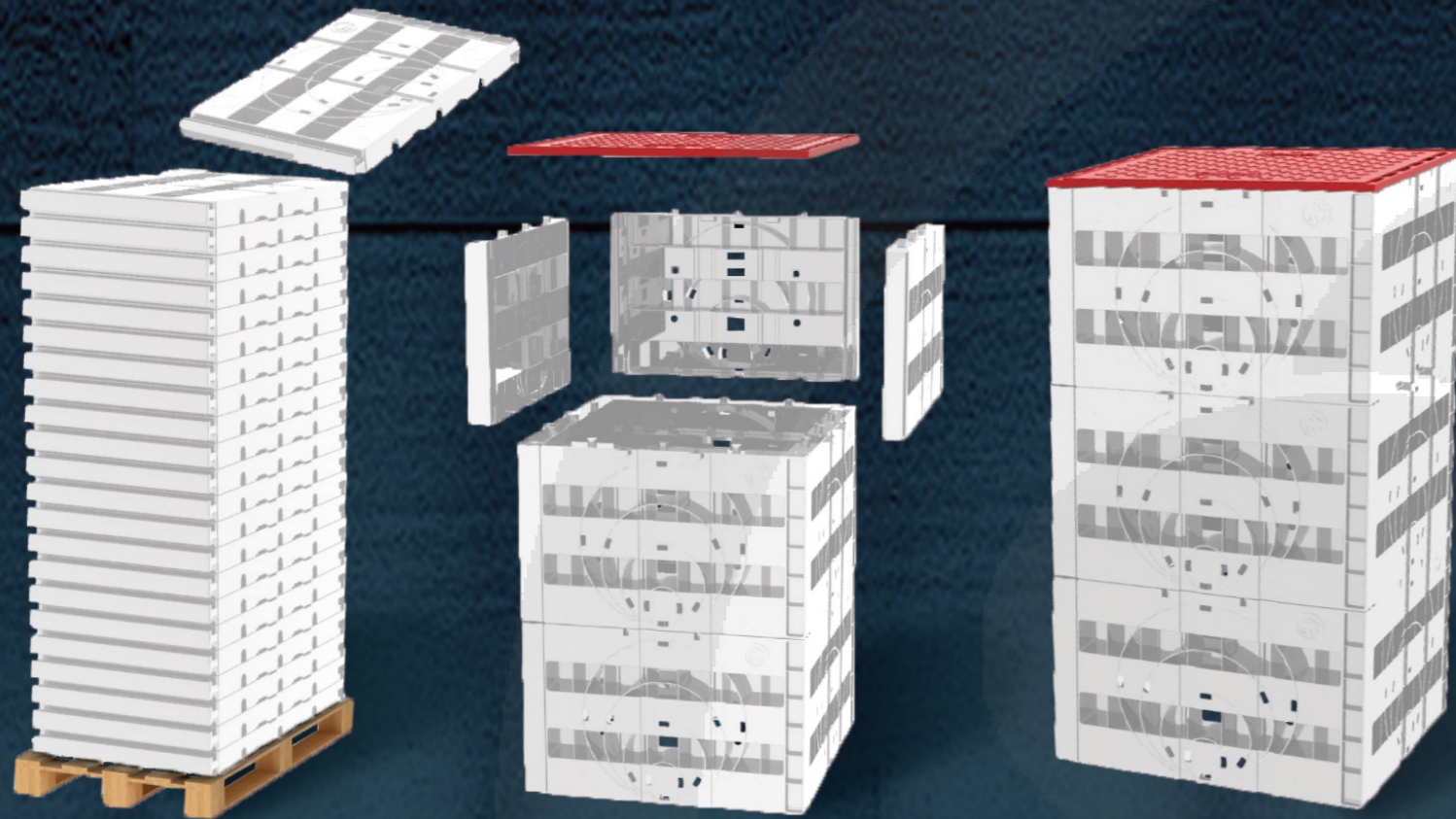
Superior Load-Bearing Capacity

Load-bearing capacity of $\geq 300 \text{ kN/m}^2$, suitable for use under landscaping and pedestrian pathways.

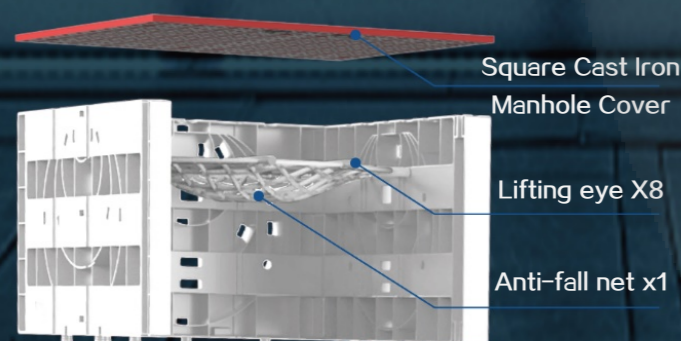


LD-FJ-2

方形检查井 Modular Square Inspection Chamber



Modular square inspection chamber top structure



Square Cast Iron Manhole Cover

Lifting eye X8

Anti-fall net x1

LeDo modular square inspection chambers can be perfectly paired with LeDo PP modules



Easy to transport

Compared with traditional round shafts, LeDo modular square inspection chambers significantly reduce transportation costs through clever stacking and assembly methods.

Easy to install

LeDo modular square inspection chambers are sequentially assembled with PP modules during installation, with each piece weighing only 5.0kg. Compared to the relatively bulky traditional round shafts, this greatly reduces the difficulty of installation and construction risks.

Safe and stable

LeDo modular square inspection chambers can be seamlessly connected with LeDo PP modules for a perfect fit. Traditional round shafts leave large gaps when installed with PP modules, whereas LeDo modular square inspection chambers enhance the overall stability of PP module pools while maintaining aesthetic appeal during construction.

技术参数

Technical Parameters

	Non-Motorized Vehicle Parking Spaces and Small Vehicle Parking Spaces	Fire Trucks/Heavy Goods Vehicles Traffic Surfaces/Fire Access Areas	Small Vehicles/Standard Large Vehicles Traffic Surfaces	Pedestrian and Landscaped Areas
	 LDX-PP-7	 LDX-PP-8	 LDX-PP-9	 LDX-PP-10
Product Model				
Material	PP(Polypropylene)	PP(Polypropylene)	PP(Polypropylene)	PP(Polypropylene)
Axial Bearing Capacity (kN/m²)	≥450	≥650	≥650	≥300
Lateral Bearing Capacity (kN/m²)	≥70	≥500	≥150	≥70
Single Panel Dimensions (mm)	800*800*250	/	1200*600*150	800*400*500
Individual Unit Dimensions (mm)	800*800*500	800*800*500	1200*600*300	800*400*1000
Pedestrian and Landscaped Areas	Min Cover Depth(mm)	800	800	800
	Max Cover Depth(mm)	2650/4000 ^[1]	4000	3000
	Max Burial Depth(mm)	5000/7000 ^[1]	7000	5500
	Max Num. of Layers	5/7 ^[1]	9	12
Non-Motorized Vehicle Parking Spaces and Small Vehicle Parking Spaces	Min Cover Depth(mm)	800	800	800
	Max Cover Depth(mm)	2500/3000 ^[1]	4000	2800
	Max Burial Depth(mm)	4500/6000 ^[1]	7000	5500
	Max Num. of Layers	4/6	9	10
Small Vehicles/Standard Large Vehicles Traffic Surfaces	Min Cover Depth(mm)	--/800 ^[1]	800	800
	Max Cover Depth(mm)	--/3000 ^[1]	4000	2650
	Max Burial Depth(mm)	--/6000 ^[1]	7000	5000
	Max Num. of Layers	--/6 ^[1]	9	9
Fire Trucks/Heavy Goods Vehicles Traffic Surfaces/Fire Access Areas	Min Cover Depth(mm)	--	800	800
	Max Cover Depth(mm)	--	3500	2500
	Max Burial Depth(mm)	--	7000	4500
	Max Num. of Layers	--	8	8

Notes:

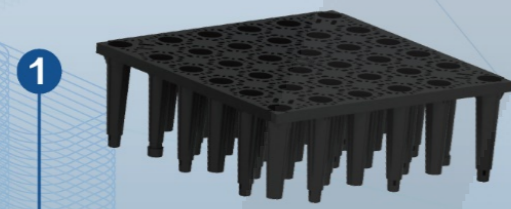
1. [1] Refers to the combined use of LDX-PP-7 and LDX-PP-8.
2. [2] Refers to the combined use of LDX-PP-10 and LDX-PP-8.

3. [3] Indicates the short-term single-layer load-bearing capacity of rainwater PP modules.
4. -- Indicates not applicable.

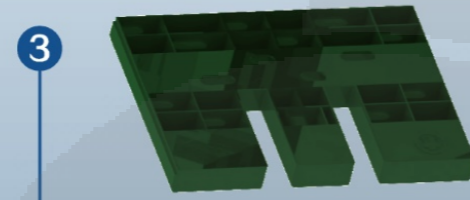
模块部件

Modular Components

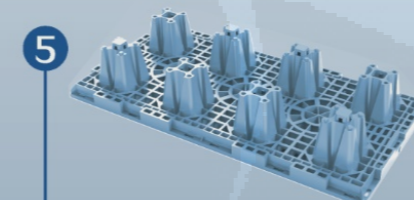
All models
can be freely combined



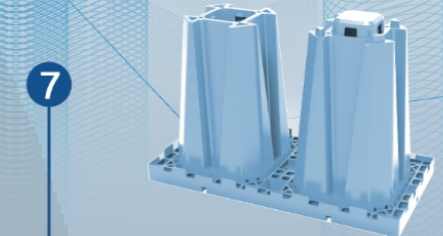
LDX-PP-7 Main Body



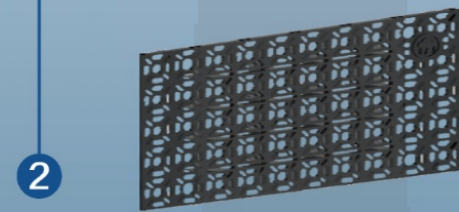
LDX-PP-8 Main Body



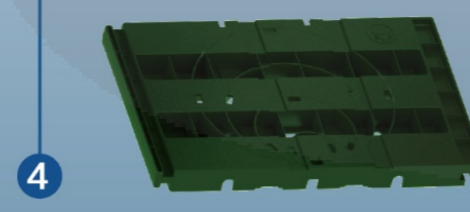
LDX-PP-9 Main Body



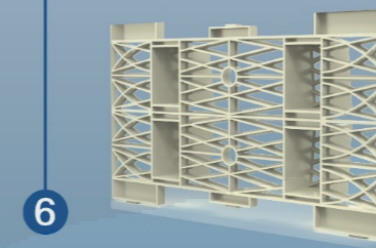
LDX-PP-10 Main Body



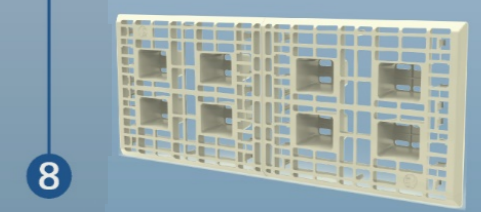
LDX-PP-7 Side Panels



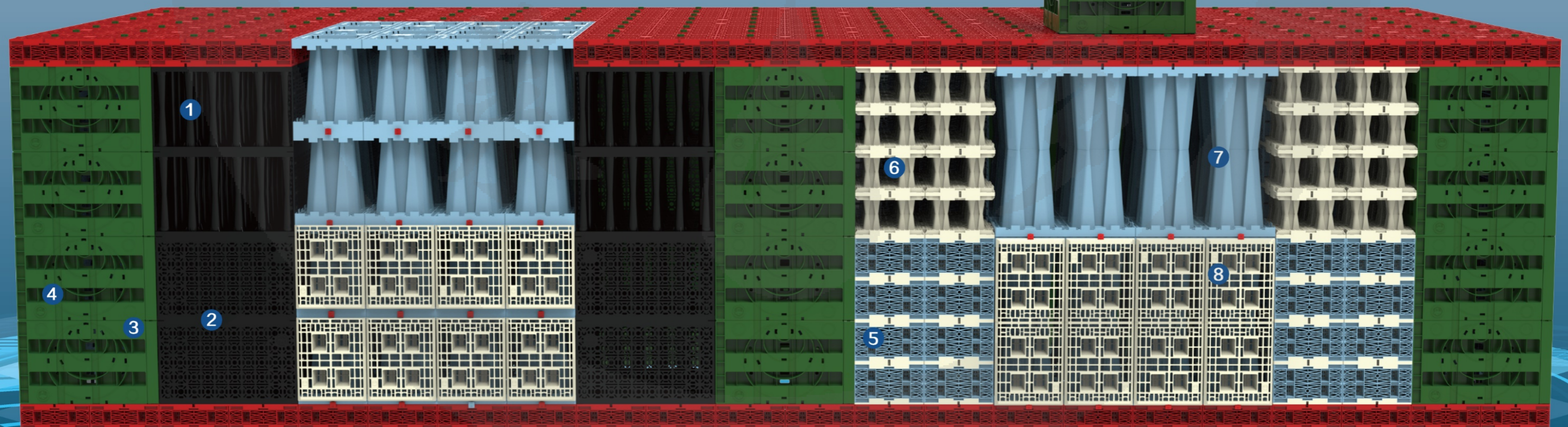
LDX-PP-8 Side Panels



LDX-PP-9 Side Panels



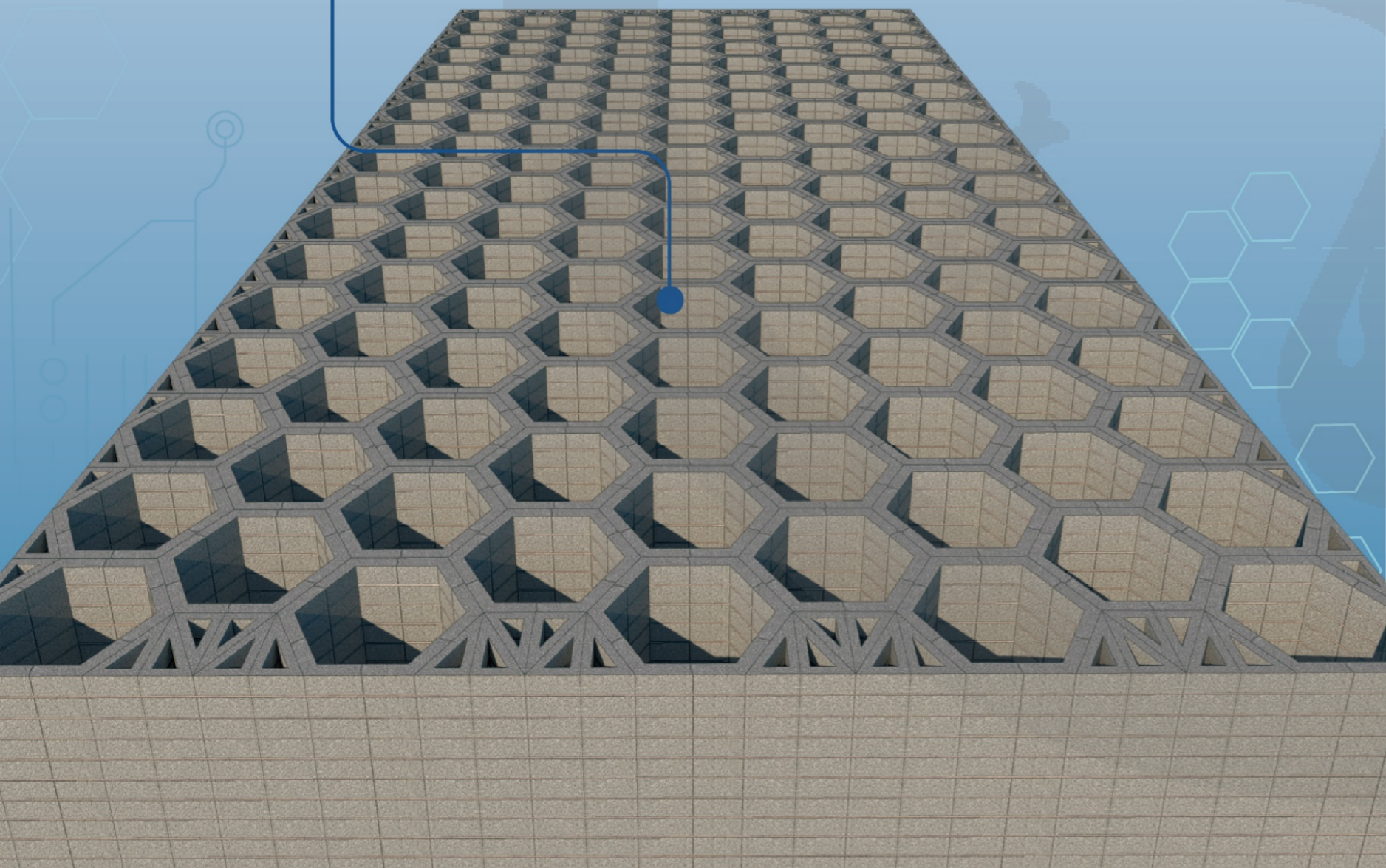
LDX-PP-10 Side Panels



蜂巢硅砂水池

Honeycomb Silica Sand Tank

- ◆ Honeycomb layout, prefabricated enclosure structure, stable and safe
- ◆ Silica sand honeycomb water storage and self-purification technology, simulating the natural groundwater ecological self-purification principle, preserving water quality
- ◆ Silica sand material, sourced from nature, returned to nature, environmentally friendly and energy-saving, pollution-free and sustainable



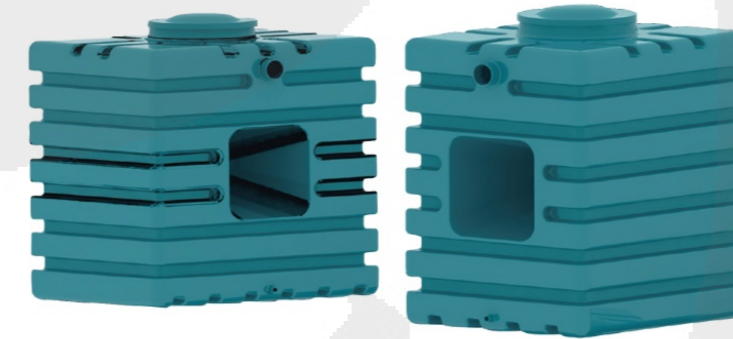
其他类型水池

Other Types Of Water Pools



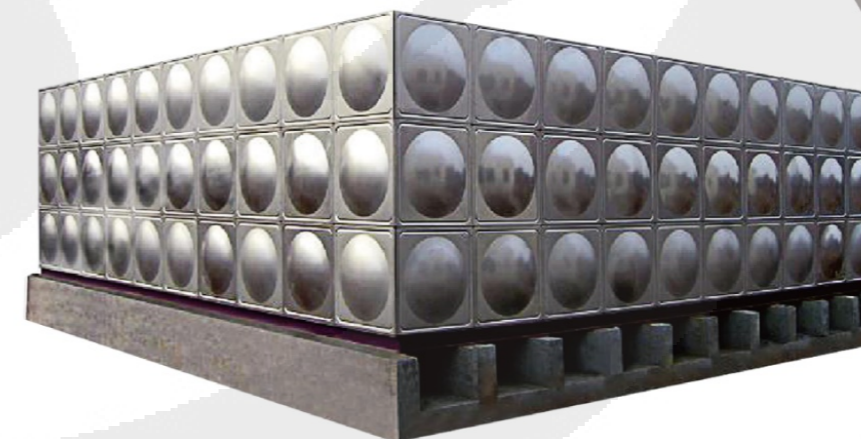
Horizontal Carbon Steel Tank

Pipe Gallery-style PE (Polyethylene) Tank



Square PE (Polyethylene) Tank

Prefabricated FRP (Fiberglass Reinforced Plastic) Tank



Stainless Steel Tank

安装示例

Installation Examples



安装示例

Installation Examples



经销网络

Distribution Network

Global network

Established 13 branch offices and representative offices

The distribution network spans the entire country, with patented products exported to multiple countries worldwide

Establish a 'Five-in-One' Water Sector Technology System



Four major production bases

- Eastern China - Shanghai
- Southwest China - Chengdu
- Northern China - Qingdao
- Southern China - Fuzhou

Four major water research institutions

- United States
- Germany
- Shanghai, China
- Zhuhai, China